

**Mrinmoyee™**

*Solutions for Cleaning & Hygiene*

**PROFFESIONAL CLEANING EQUIPMENTS**

[www.mrinmoyee.in](http://www.mrinmoyee.in)

## Glass Cleaning & High Dusting Tools



### Telescopic Pole

Available in  
3mtr, 4.5mtr, 6mtr and 9mtr



### Micro Fibre Cloth

Size - 40 cm - 40 cm



### Fan Blade Brush / Round Dust Brush



### Waist Tube Brush / Flexible Cob Web Brush



### Floor Scraper



### Glass Washer



### Glass Cleaning Comby

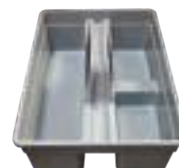


### Glass wiper

Available in 35 cm & 25 cm



### Glass Scraper



### Cady

Also Available in  
Blue, Red, Green & Yellow



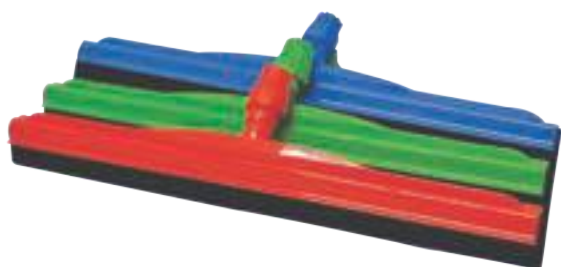
### Glass Cleaning Bucket



Glass Cleaning Kit  
(Includes Telescopic Pole 1.2 Mtr., Window Washer 35 cm, Replacement Rubber,  
Window Squeeze 25 cm / 35 cm, 45 cm., Floor Scraper, SS Glass Scraper,  
Sponge, Scraper Replacement Blade 5 Pcs., Joint for Telescopic Pole)

# Floor Wipers and Brushes

**Mrinmoyee**<sup>TM</sup>  
*Solutions for Cleaning & Hygiene*



## Double Blade Floor Wiper

Available Size - 35 cm - 45 cm & 55 cm

Usage - Industrial

Area of Application - Any kind of Floor Except rough & Uneven Surfaces.  
Green, Red and Yellow colors are for Specially Hospitals & Health Care units.



## Single Blade Floor Wiper

Available Size - 40 cm & 55 cm

Usage - Domestic & Industrial

Area of Application - Any kind of Floors. Specially inside Area



## Heavy Duty Floor Scrubbing Brush

Available in 18" & 22"

Usage - Industrial Area of Application - Outer Side, Rough & Uneven Floor.  
Specially for Heavily Greasy floors



## Floor Scrubbing Brush

Available in 18" & 24"

Usage - Domestic & Industrial Area of Application - Any type of Floors.



## Floor Sweeping Brush

Available in 18" & 24"

Usage - Domestic & Industrial Area of Application - Any type of Floors.



## Carpet Brush



## Toilet Brush

## Wringer Trolley



### Three Bucket Mop Wringer Trolley

Usage - Industrial - Specially in Hospitals & Health Care Units  
Frame - Metal / Steel  
Bucket Capacity - 20 ltr.  
Wringer Type - Side Press



### Double Bucket Mop Wringer Trolley

Usage - Industrial  
Frame - Plastic  
Bucket Capacity - 20 ltr.  
Wringer Type - Side Press



### Double Bucket Mop Wringer Trolley

Usage - Industrial  
Bucket Capacity - 20 ltr.  
Wringer Type - Side Press  
Frame - Metal



**20 Ltr. Bucket**



**Caster Bucket**



### Single Bucket Mop Wringer Trolley

Usage - Domestic & Industrial  
Bucket Capacity - 20 ltr.  
Wringer Type - Side Press



# Trollies

**Mrinmoyee**™  
*Solutions for Cleaning & Hygiene*



**Laundry Trolley**  
Heavy Stainless Steel Frame  
Foldable & Ergonomic Design



**Maids Cart Trolley**  
Dimension - Length 58 Inch.  
Width 22 Inch.  
Height 48 Inch.



**Janitor Cart**



**Multi Function Janitor Cart**



## 3-in-1 Double Bucket Mop Wringer Trolley

Usage - Industrial  
Frame - Plastic  
Bucket Capacity - 25 ltr.  
Wringer Type - Side Press



**Side Press  
Wringer**



**Wheel for  
Trolley**

## Dry Mop



### Complete Set - Dry Mop Acrylic

Usage - Domestic & Industrial  
Available in Size - 40 cm, 60 cm & 80 cm



**Micro Fibre Dry Mop Refill**



### Dry Mop Frame

Size - 40 cm, 60 cm & 80 cm  
Also Available in Red, Green & Yellow



### Cotton Dry Mop Refill

Usage - Industrial - Specially in Hospitals & Health Care Units

## Wet Mops



### Flat Mop Micro Fibre

Usage - Domestic & Industrial  
Available Size - 35 cm, 60 cm  
Area of Application - All type of Floors, Except Rough Floors.  
its Best Suitable for low Traffic Areas.  
it can be Used as Dry & Wet Both.



### Micro Fibre Wet Mop Refill

Usage - Domestic & Industrial



### Micro Fibre Collapsible Mop

Usage - Domestic & Industrial  
Available Size - 42 cm, 60 cm  
Area of Application - All type of Floors, Except Rough Floors.  
its Best Suitable for low Traffic Areas.  
it can be Used as Dry & Wet Both.

### Round Mop Refill



**Bleached Cotton  
Wet Mop Refill-Cut end**



**Colour Cotton Wet Mop Refill- Loop End.**



**Cotton Wet Mop Refill,  
Natural, Loop End.**



**Cotton Wet Mop Refill, Bleached  
Loop End with Colour Coded Strip**



**Loop End With Color Patti**



**Wet Mop Clip**

## Accessories & Other Products

**Mrinmoyee**™  
*Solutions for Cleaning & Hygiene*



### Lobby Dust Pan Set

Available in Black & Grey Color  
Usage - Industrial



### Caution Board

Available in Wet Floor, Cleaning in Progress,  
Working in Progress, Maintenance in Progress No Parking, No Smoking



### Spray Bottle (750 ml)



### Premium Hand Pump



### Aluminium Handle

Available in - 22 mm & 24 mm Dia  
Usage - Domestic & Industrial  
Length- 5ft & 4ft  
Type- Hole End & Screw End.



**Super  
Flexi  
Unbreakable  
Handle.  
Food Grade Approved,  
Made out of HDPE Materials**



### Tools Hanger

## **MRINMOYEE SUPPLY PVT. LTD**

### **CORPORATE OFFICE**

E-4, Rishi Tech Park, 5th Floor  
Street 360, AA1D, New Town, Kolkata-700156

**Phone: 033 4019 1400, Fax : 033 4019 1401**

Email: [query@mrinmoyee.in](mailto:query@mrinmoyee.in)

Website: [www.mrinmoyee.in](http://www.mrinmoyee.in)

### **FACTORY & WAREHOUSE**

B. D. Casting Commercial Complex  
Par Dankuni, Hooghly, West Bengal



**~ Our Authorised Distributor ~**

**for Trade Enquiry Call : 9007618792, 7003270514**

### **Pan India Presence**

Ahmedabad, Amritsar, Angul, Agra, Belgaon, Bengaluru, Bhubaneswar, Coimbatore, Chennai, Cuttack, Dehradun, Delhi, Durgapur, **Faridabad**, Guwahati, Gurgaon, Hyderabad, Indore, Jaipur, Jamshedpur, Kanpur, Kochi, Kolkata, Lucknow, ManGalore, Mumbai, Patna, Puducherry, **Pune**, Puri, Raipur, Ranchi, Rourkela, Sikkim, Siliguri, Srinagar, Surat, Trivandam, Valsad, Visakhapattanam, Nagpur, Jazzpur.